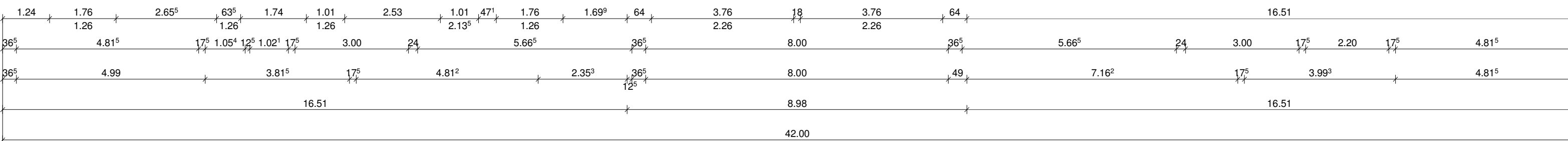
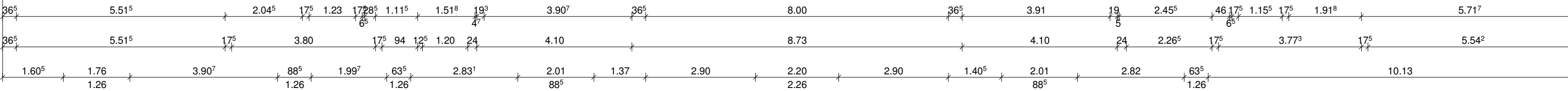


42.00

17.00

8.00

17.00

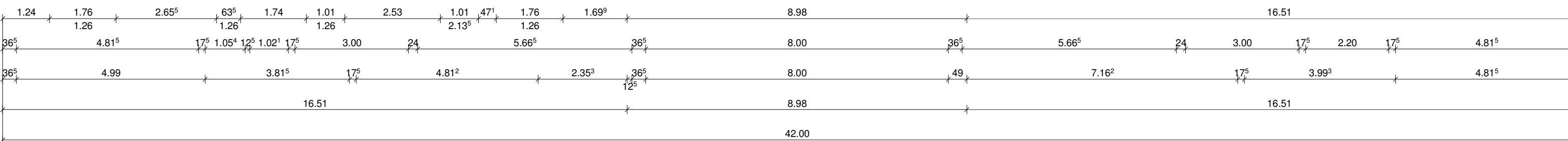
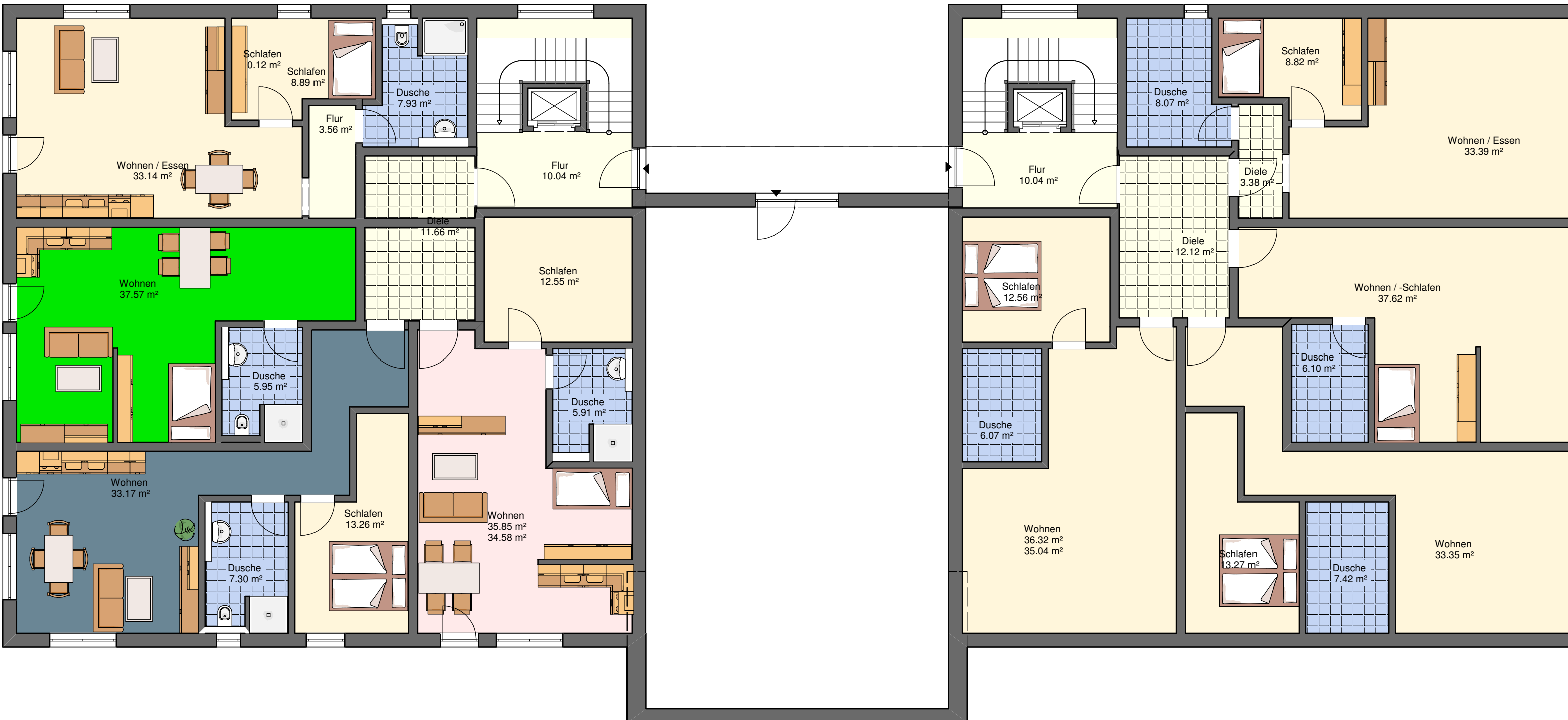
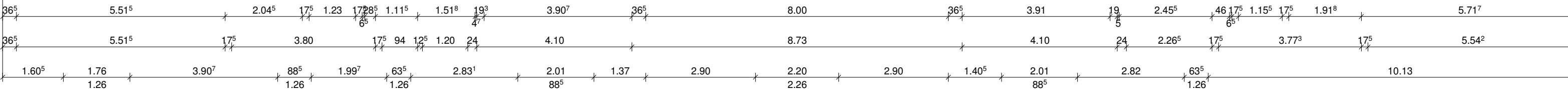


42.00

17.00

8.00

17.00



42.00

17.00

8.00

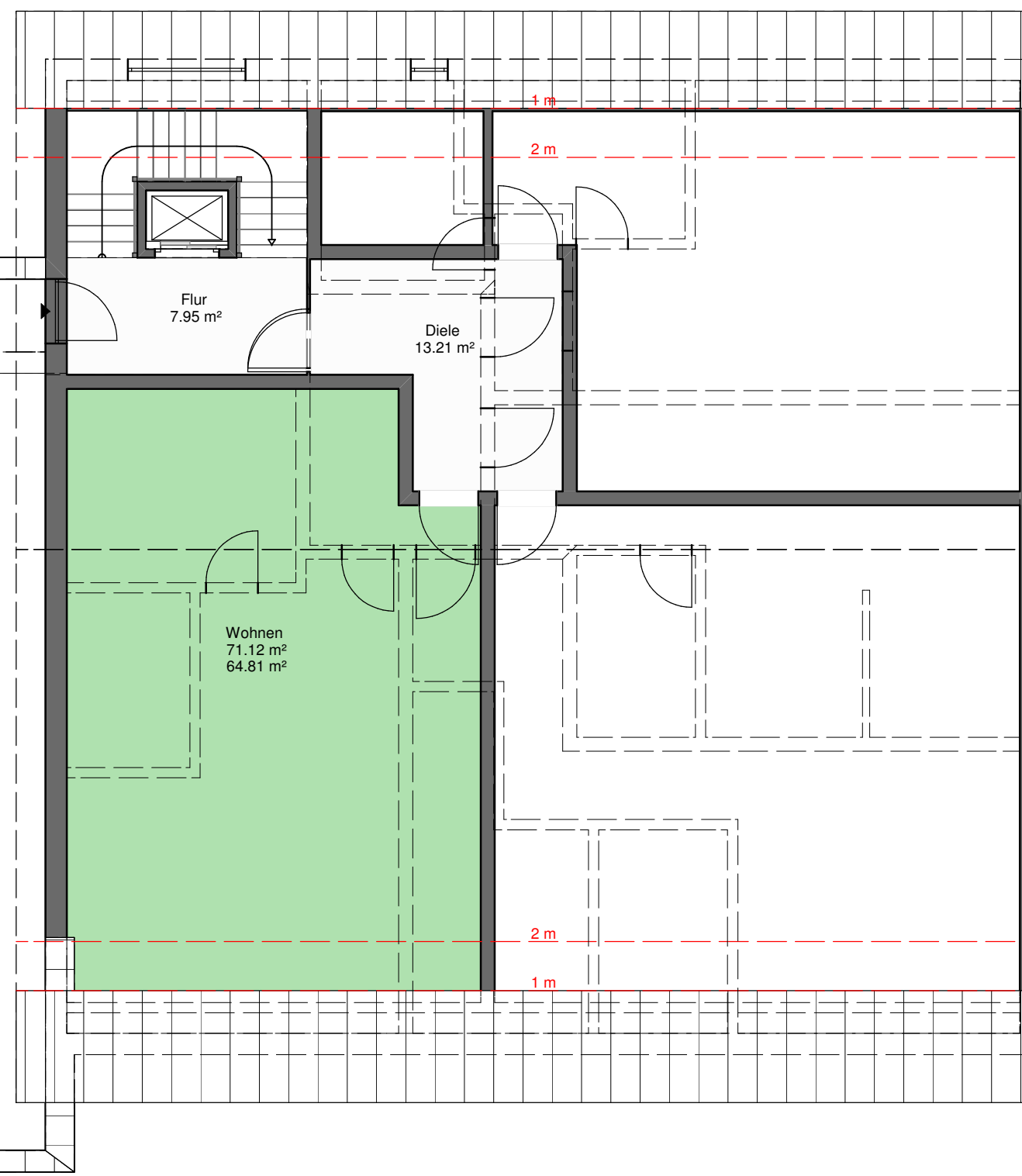
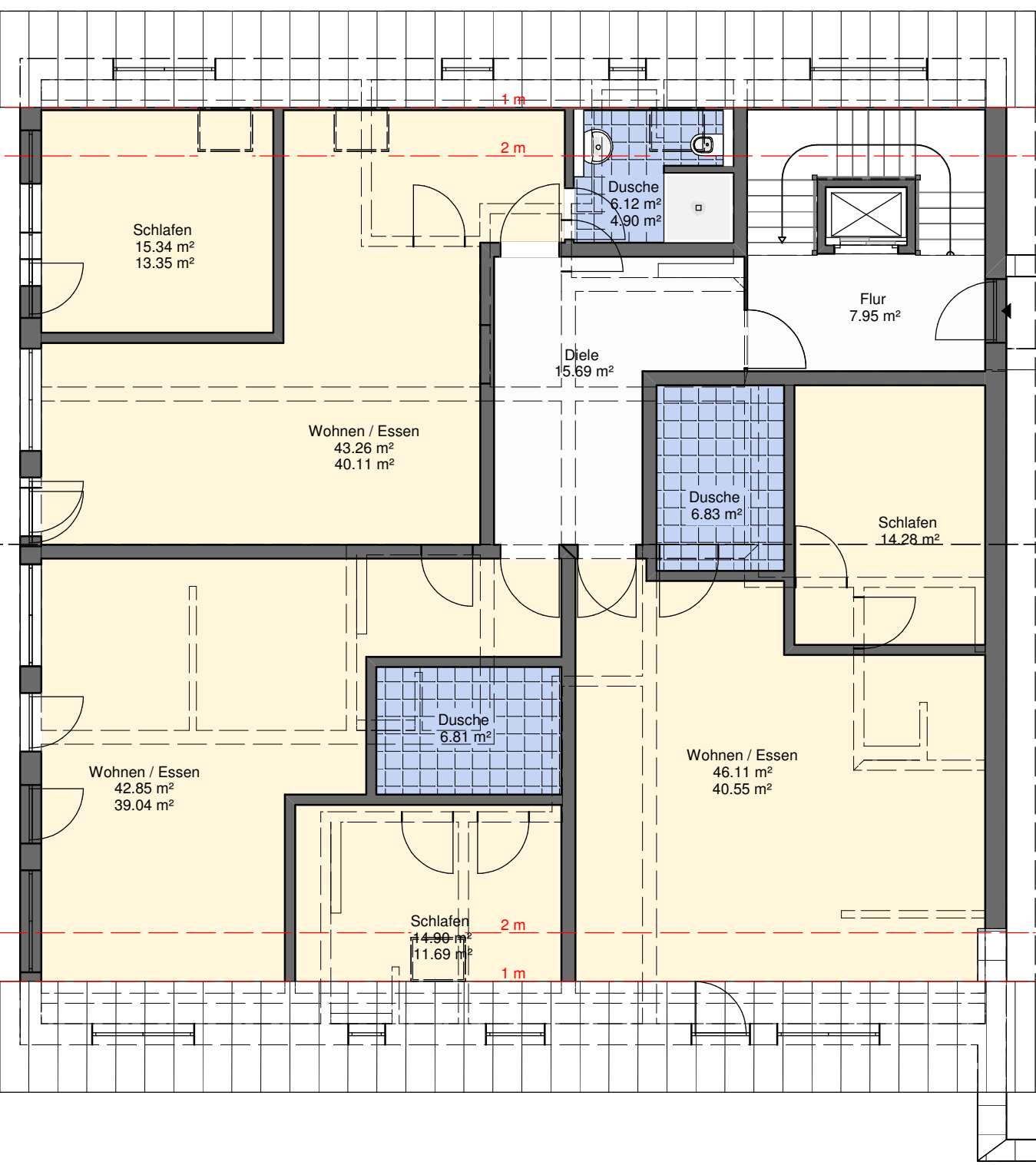
17.00

36⁵ 3.99⁸ 17⁵ 3.39² 24 1.22 15 1.55⁵ 1.02⁵ 24 63⁵ 17⁵ 3.29 36⁵ 8.00 36⁵ 4.15 1.51⁵ 24 1.21 15 1.20 24 7.56⁵

16.27

8.00

16.27



16.27

8.00

16.27

36⁵ 4.20 17⁵ 1.22⁵ 17⁵ 3.19 24 6.94 49 8.00 36⁵ 49 6.94 24 8.96⁵

16.51

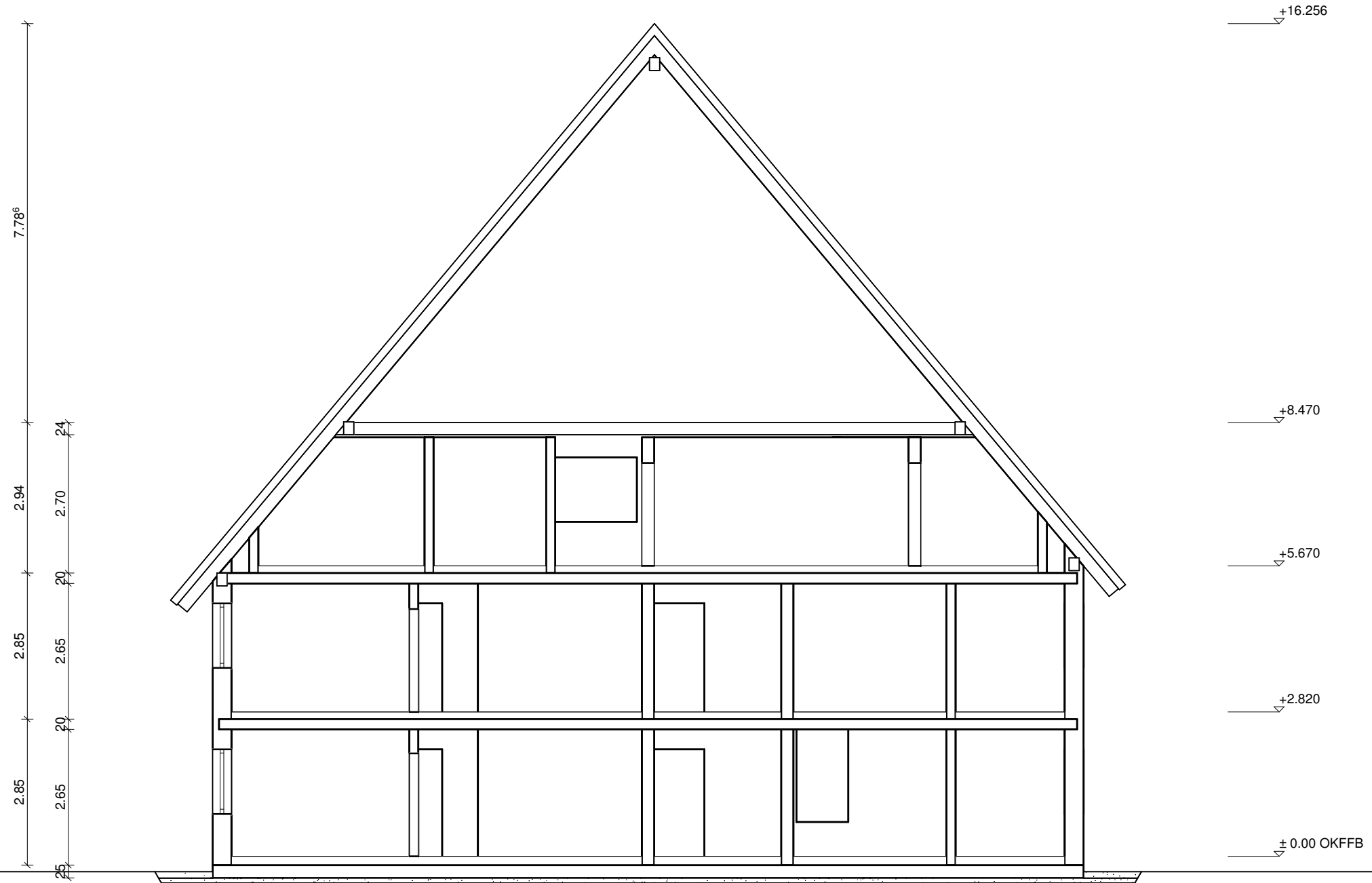
8.98

16.51

42.00

Dachkonstruktion lt. Statik

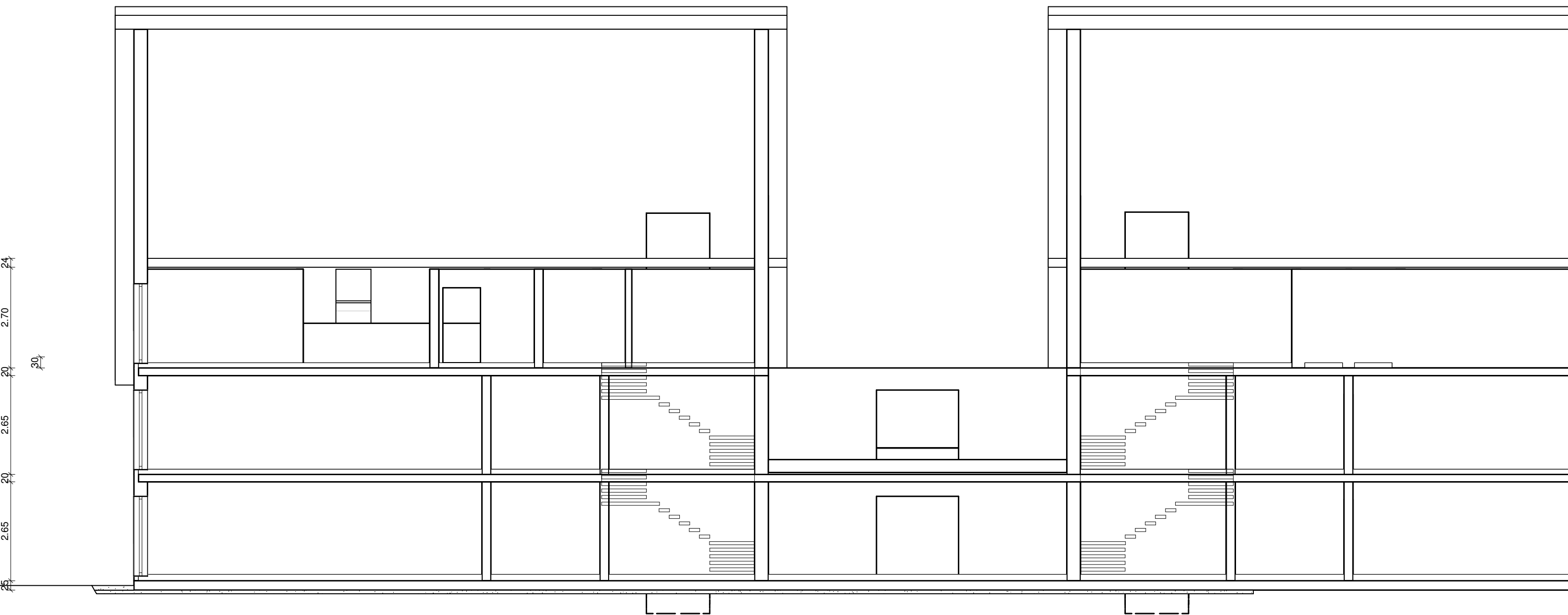
Dachneigung: 50.0°



Bodenplatte C 25/30 d=25cm
Filterschicht 0/60 d=10cm

Dachkonstruktion lt. Statik

Dachneigung: 50.0°



Bodenplatte C 25/30 d=25cm
Filterschicht 0/60 d=10cm

